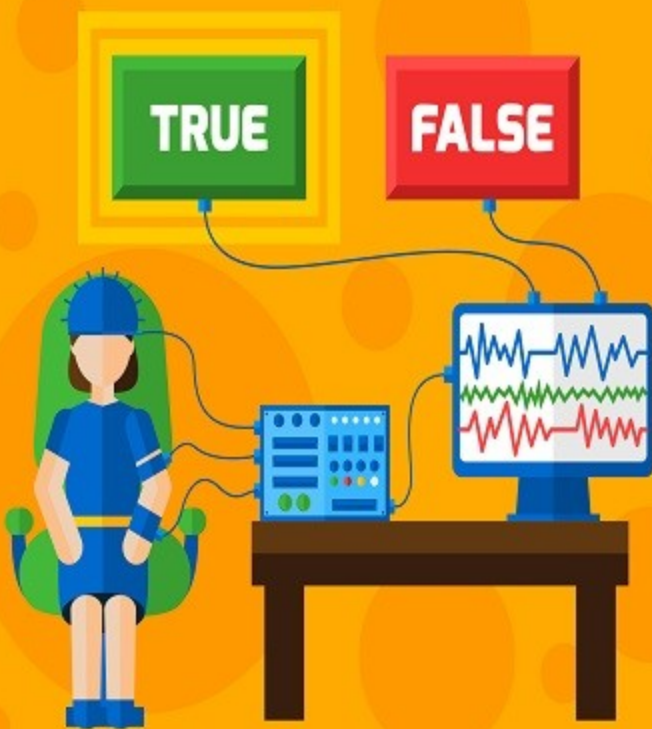


LIE DETECTOR



POLYGRAPH

# LAW ENFORCEMENT POLYGRAPH PREVIEW



LIE AND TRUTH



EXAMINATION

Despite what you may have heard or read, "deceiving" the polygraph is extremely difficult, and **any attempt to do so will get you disqualified** and categorized as "deceptive." Being labeled dishonest will ruin any chance of securing a law enforcement position at all agencies in the future. Many individuals who attempt to manipulate the polygraph examination do so to conceal embarrassing circumstances or criminal behavior. Experience has shown the incident the candidate thinks would preclude their hiring was of minor consequence and would not have prevented advancement to the next selection phase.

Resist the temptation to research anti-polygraph methods and never rely upon or attempt any recommendations you might encounter. There are numerous websites, videos, and printed material that purport to teach how to beat the "Black Box." The polygraph electronically measures your physiological responses to the questions, and you will not be able to control your pulse, respiration, skin temperature, and blood pressure.

Your examiner will question you about research attempts and if you used any methods to alter your physical responses. Such techniques as placing a thumbtack in your shoe and pressing down during questioning, using alcohol or narcotics to alter your physical responses will immediately disqualify you.

Reading the following questions and having a basic understanding of how the polygraph is used and operates will not disqualify you. These questions are commonly available and offered as a download on many police department websites so as to allow applicants to complete the questionnaire in advance. Polygraph questionnaires investigate the following subject area: 1) Employment History, 2) Theft, 3) Crimes Against Persons, 4) Criminal Activity, 5) Drug Usage.

All the resources the [Law Enforcement Guru](#) provides will prepare you for the rigors of the application and selection process. When asked by an agency representative what you did to prepare for a career in law enforcement, feel free to respond you undertook a comprehensive study course designed to ensure your success, which included information regarding the polygraph as a component of the process. Explain you were explicitly cautioned against researching the polygraph such as it measures physiological responses and are impossible to alter.

For additional resources and to join a community of individuals preparing for their law enforcement careers click below.

[Law Enforcement Guru Facebook Group](#)

**THE FOLLOWING QUESTIONS ARE ANSWERED "YES OR "NO."**

1. DID YOU INTENTIONALLY OMIT ANY EMPLOYMENT FROM YOUR APPLICATION?
2. WILL ANY OF YOUR CURRENT OR PAST EMPLOYERS GIVE YOU AN UNFAVORABLE RECOMMENDATION?
3. HAVE YOU BEEN TRUTHFUL AND COMPLETE ABOUT THE REASONS FOR LEAVING EACH OF YOUR JOBS?
4. IS ANYONE LIKELY TO REPORT DEROGATORY INFORMATION ABOUT YOUR WORK PERFORMANCE?
5. HAVE YOU EVER BEEN DISCIPLINED BY AN EMPLOYER?
6. HAVE YOU EVER VIOLATED A WORK RULE WHICH WOULD HAVE RESULTED IN DISCIPLINE OR TERMINATION, HAD IT BEEN DISCOVERED?
7. HAVE YOU EVER BEEN FIRED FROM A JOB FOR ANY REASON, ASKED TO RESIGN, OR LEFT TO AVOID BEING FIRED?
8. HAVE YOU EVER BEEN IN AN ARGUMENT WITH CO-WORKERS OR SUPERVISORS DURING WHICH YOU RAISED YOUR VOICE IN ANGER?
9. WERE YOU EVER TURNED DOWN BY ANY OF THE ARMED FORCES?
10. HAVE YOU EVER SERVED IN ANY ARMED FORCE, NATIONAL GUARD, OR MILITARY RESERVE?
11. WHILE IN THE SERVICE, WERE YOU EVER CHARGED WITH A VIOLATION OF THE UCMJ? (Captain's Mast, Office Hours, Court Martial, etc.).
12. WERE YOU EVER THE SUBJECT OF ANY MILITARY INVESTIGATION?
13. WERE YOU EVER DISCIPLINED OR REDUCED IN RANK?

14. WHILE IN THE SERVICE, WERE YOU EVER AWOL OR ON UNAUTHORIZED ABSENCE?
15. WHILE IN THE SERVICE, COULD YOU HAVE REENLISTED IF YOU WANTED TO?
16. DO YOU HAVE ANY REASON TO BE CONCERNED ABOUT AN INVESTIGATION INTO YOUR JOB HISTORY?
17. ARE YOU INTENTIONALLY WITHHOLDING INFORMATION ABOUT YOUR EMPLOYMENT?
18. SINCE YOU WERE 14 YEARS OLD, HAVE YOU EVER SHOPLIFTED ANYTHING?
19. HAVE YOU EVER STOLEN MONEY FROM A PLACE WHERE YOU WORK?
20. HAVE YOU EVER GIVEN A DISCOUNT, FREE MERCHANDISE OR UNDER CHARGED A SALE FOR YOURSELF, FAMILY MEMBER OR A FRIEND?
21. HAVE YOU EVER COLLECTED WELFARE OR UNEMPLOYMENT BENEFITS WHEN YOU WERE NOT ENTITLED TO THEM?
22. HAVE YOU EVER TAKEN A MOTOR VEHICLE WITHOUT THE OWNERS PERMISSION?
23. HAVE YOU EVER TAKEN A JOY-RIDE IN A STOLEN VEHICLE?
24. HAVE YOU EVER TAKEN OFFICE SUPPLIES FROM A PLACE WHERE YOU WORKED?
25. HAVE YOU EVER TAKEN MONEY FROM ANYONE WITHOUT PERMISSION? 9. HAVE YOU EVER SWITCHED THE PRICE TAGS ON MERCHANDISE?
26. HAVE YOU EVER STOLEN A CREDIT CARD?
27. HAVE YOU USED A CREDIT CARD WITHOUT THE OWNERS PERMISSION?
28. HAVE YOU EVER TAKEN ANYTHING FROM ANYONE, THAT YOU WERE ASHAMED OF?
29. HAVE YOU EVER BORROWED SOMETHING FROM SOMEONE, AND INTENTIONALLY NOT RETURNED IT?

30. HAVE YOU EVER RECEIVED STOLEN PROPERTY?

31. HAVE YOU EVER WRITTEN A CHECK KNOWING YOU DID NOT HAVE SUFFICIENT FUNDS IN THE ACCOUNT TO COVER THE CHECK?

32. HAVE YOU EVER BROKEN INTO A VENDING MACHINE OR ANY OTHER COIN OPERATED MACHINE?

33. HAVE YOU EVER BROKEN INTO A BUILDING, STRUCTURE, OR VEHICLE IN ORDER TO STEAL CASH OR PROPERTY?

34. HAVE YOU EVER OBTAINED PROPERTY UNDER FALSE PRETENSES?

35. HAVE YOU EVER FILED A FALSE INSURANCE CLAIM?

36. HAVE YOU EVER FILED WORKMAN'S COMPENSATION OR AN UNEMPLOYMENT CLAIM FRAUDULENTLY?

37. HAVE YOU EVER STRUCK ANOTHER PERSON (outside of play, athletic competition, or scope of employment) SINCE THE AGE OF 18?

38. HAVE YOU EVER STRUCK A CHILD WHICH RESULTED IN INJURY OR BRUISING?

39. HAVE YOU EVER STRUCK, SLAPPED, PUSHED, OR KICKED A CURRENT OR PAST ROOMMATE, SIGNIFICANT OTHER, SPOUSE, BOYFRIEND, OR GIRLFRIEND?

40. HAVE YOU EVER UNLAWFULLY TAKEN THE LIFE OF ANOTHER HUMAN BEING?

41. HAVE YOU EVER UNLAWFULLY KEPT A PERSON CAPTIVE AGAINST THEIR WILL?

42. SINCE THE AGE OF 18, HAVE YOU HAD ANY SEXUAL CONTACT WITH A PERSON UNDER THE AGE OF 16?

43. BEFORE YOU WERE 18 YRS OF AGE, DID YOU HAVE ANY SEXUAL CONTACT WITH ANYONE WHO WAS 4 OR MORE YEARS YOUNGER THAN YOURSELF?

44. HAVE YOU EVER HAD SEX WITH A NON-CONSENTING PARTNER?

45. HAVE YOU EVER INTENTIONALLY EXPOSED YOURSELF IN PUBLIC (i.e. flashing, mooning)? 10. HAVE YOU EVER PEERED INTO WINDOWS FOR SEXUAL EXCITEMENT?

46. HAVE YOU EVER DONE SOMETHING IN ANGER, THAT YOU REGRETTED LATER?

47. HAVE YOU EVER HAD ANY SEXUAL CONTACT WITH ANY ANIMAL?

48. HAVE YOU HAD ANY SEXUAL CONTACT WITH A PERSON THAT WAS INCAPACITATED IN ANY WAY (i.e. drugs, alcohol, dead)?

49. HAVE YOU EVER BOUGHT, SOLD, TRADED, OR POSSESSED EROTIC OR NUDE PICTURES OF CHILDREN?

50. HAVE YOU EVER TAKEN EROTIC OR NUDE PICTURES OF CHILDREN?

Included on the questionnaire, but not shown here are sections allowing you to explain any questions you may have answered, "Yes." You will write your response and detail the circumstances in the spaces provided.

Be sure of your answers when filling out the polygraph questionnaire, especially if applying to multiple agencies. Varying answers to the same question at different agencies may appear deceptive. There are three procedures used to complete the polygraph questionnaire. 1) The questionnaire is completed online, 2) the questionnaire is part of the application package and returned when completed, and 3) the questionnaire is completed at the agency before administering the polygraph. Whatever the method used, you should keep a copy or take notes of your responses for later reference if needed.

These 50 questions are only a small representation of the questions typically found on polygraph questionnaires. Please follow the links below and join the Law Enforcement Guru Facebook Group and subscribe to our email list to see the remaining questions.



**For additional resources follow these links:**

[Law Enforcement Guru Podcast](#)

[LawEnforcementGuru.com](#)

[@LawEnforcementGuru on Instagram](#)

[@LawEnfGuru on Twitter](#)

[LinkedIn Profile](#)

# Get the law enforcement job of your dreams!

Join the Law Enforcement Guru Private Facebook Group community to receive expert guidance and support during your journey through the application and selection process.

[Join the Law Enforcement Guru Private Facebook Group](#)

To subscribe to our email list and receive the latest updates as new resources are released click the button below.

[Join Our Email List](#)